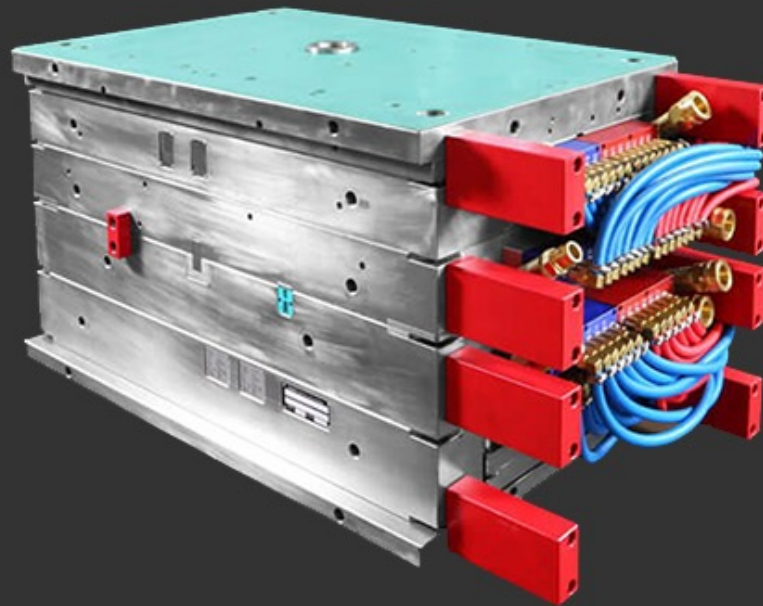




Custom Injection Mold Supplier in China ——Tip-Top Molds



TIP-TOP

Tip-Top Molds & Products (Shenzhen) Co., Ltd.



Factory Interior Scene



Company Introduction

Tip-Top Molds & Products Co., Ltd. was founded in Feb 2005 mainly for overseas customers. After more than 19 years of development, with rich experience, Tip-Top Molds is mainly engaged in ***designing and manufacturing custom injection molds*** of different kinds and at a wide range of volumes, as well as ***producing economical plastic molded parts***.

Tip-Top Molds is good at making plastic mold types, ranging from basic injection mold to complex family mold and overmold.

Our highly efficient and skilled team of design and toolmakers can guarantee top-quality molds and short delivery time. We submit progress reports along with digital pictures weekly so that our valued customers know the status of their molds throughout the tool building process. Quality engineers and technicians constantly monitor all segments of our operations from design to final mold delivery. Our main industries served are Back yard equipment, Automotive, Cosmetic, Cellular, and Home Products.

Our company has been ISO 9001 certified since 2006.

(Welcome to visit our website www.tiptopmolds.com to learn more information about us)



Why Choose TIP-TOP?

(1) Tip-Top is a reliable One-Stop-Shop for your Injection Molds and Plastic molded parts. We have fast response rate, competitive price, a professional work team, a strong quality control system, and on-time delivery, which can make you spend the least effort and money in getting your most satisfied injection molds and plastic molded parts.

(2) Tip-Top Molds is mainly engaged in Injection Mold Design, Injection Mold Making, and Plastic Part Molding, including both prototype and high-volume production tools.

(3) Highly efficient and skilled team of design and toolmakers of Tip-Top Molds can guarantee top-quality molds and short delivery time. We submit progress reports along with weekly digital pictures so that our valued customers know the status of their molds throughout the tool-building process. Quality engineers and technicians constantly monitor all segments of our operations from design to final mold delivery.



Our Suppliers

Mold Base: LKM, Pingjin, Shenlong;

Steel: Finkl, ASSAB, Gröditz, Buderus, LKM;

Hot Runner: Incoe, DME, Ewikon, Hasco, Yudo, Moldmaster;

Components: Staubli Connectors, DME, HASCO, Progressive Components;

Hydraulic Cylinders: Merkle, Parker.



Contact Us

Address: 1/F, Hengshou Bldg, No.12, District B,
Liantang Industrial Park, Shangcun,
Gongming, Guangming, Shenzhen, China

Website: www.tiptopmolds.com

Contact Person:

Sheryl Yu Email: sherylyu@t2molds.com Tel: +86-755-2755-9593



Iris Chen Email: irisch@t2molds.com

Tel: +86-755-2717-9067 ; Fax: +86-755-2717-9221

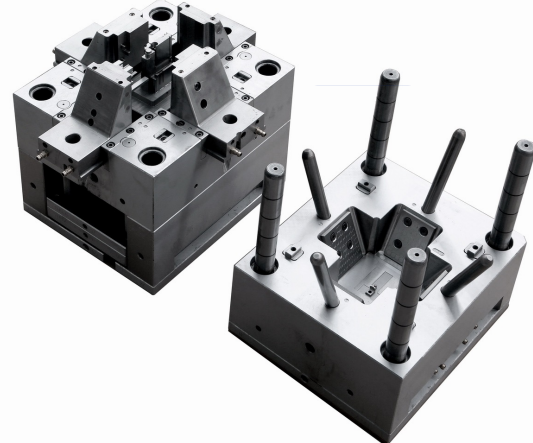
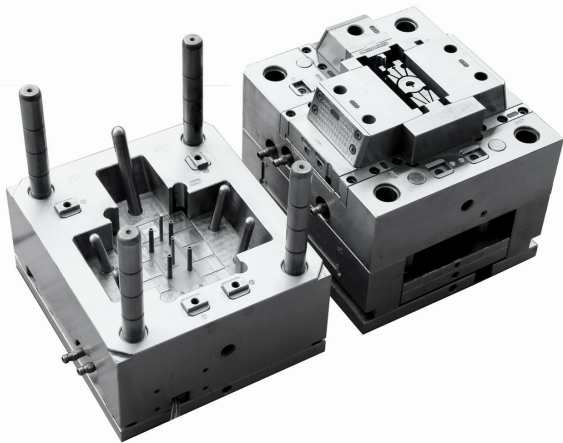
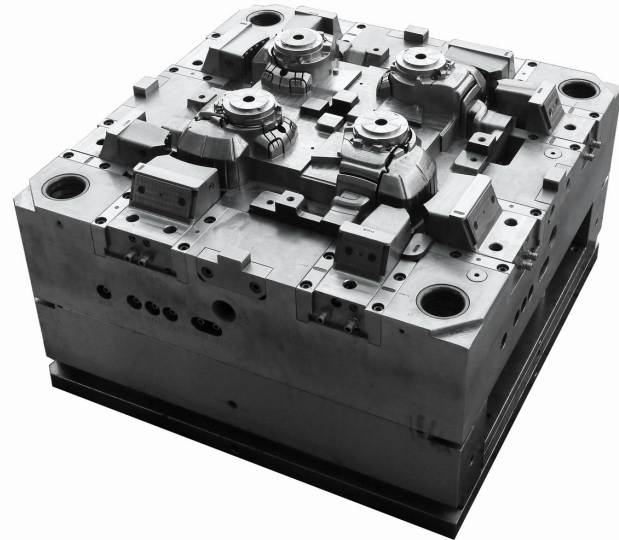
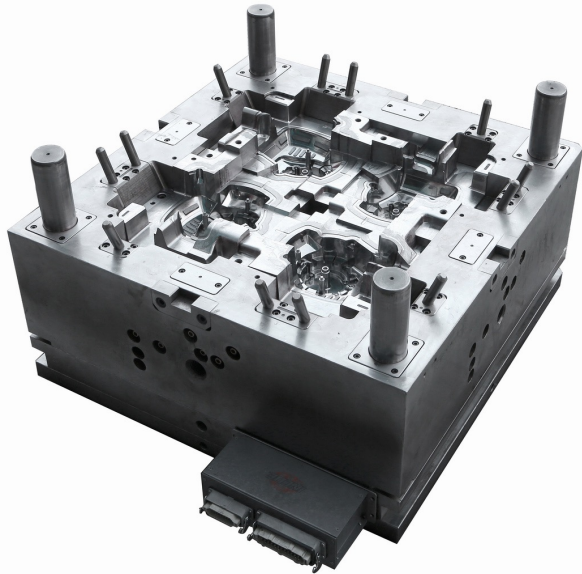


For 720° view about our company, please visit:

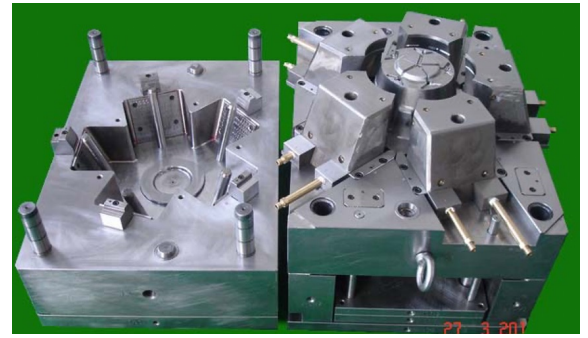
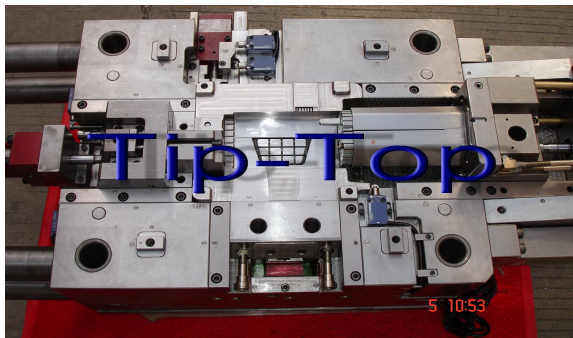
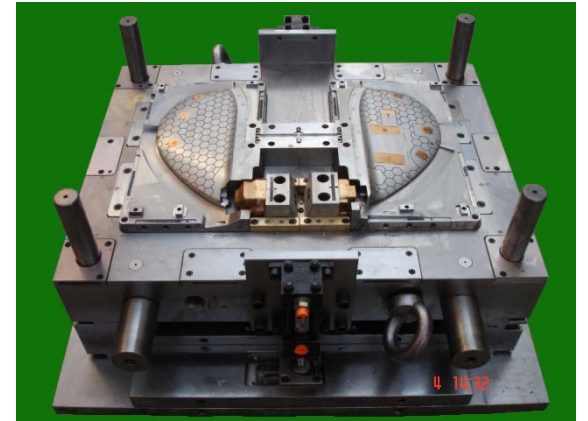
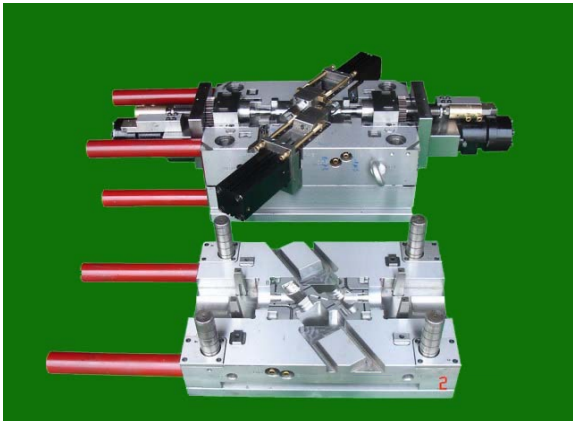
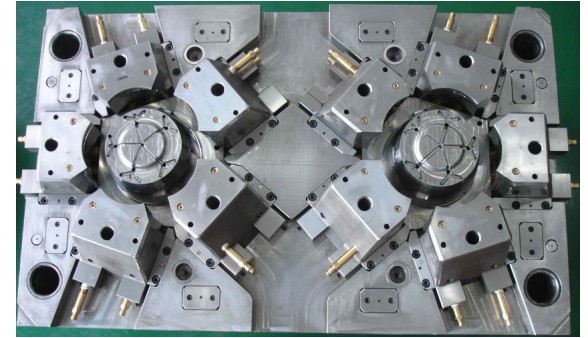
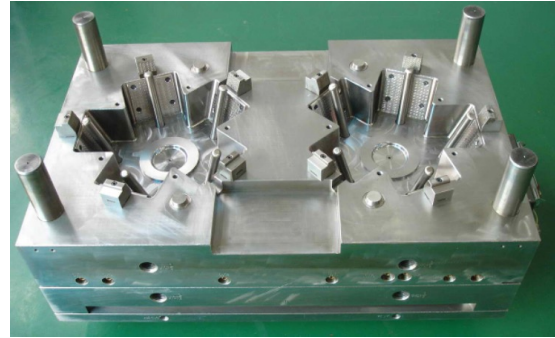
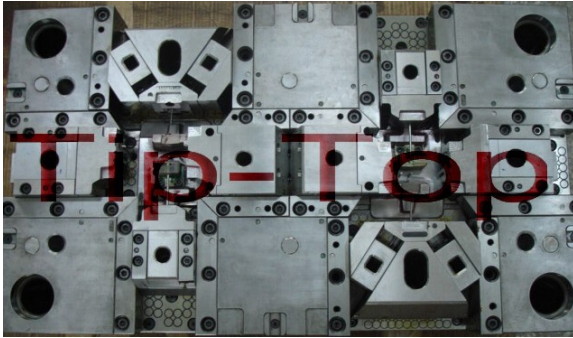


https://www.720yun.com/t/4dakhie0fb?scene_id=123667137#scene_id=123667137

Molds made by Tip-Top



Molds made by Tip-Top



.....

 [More Mold Pictures](#)

Samples of Injection Molded Part

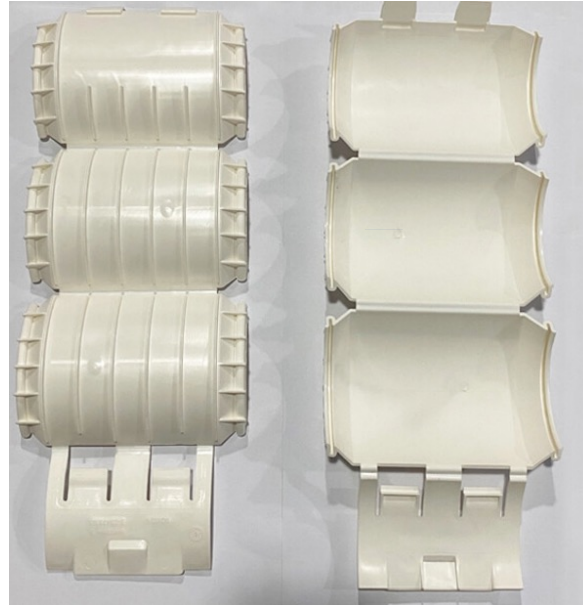


TIP-TOP

Samples of Injection Molded Part



Samples of Injection Molded Part



.....



[More Sample Pictures](#)



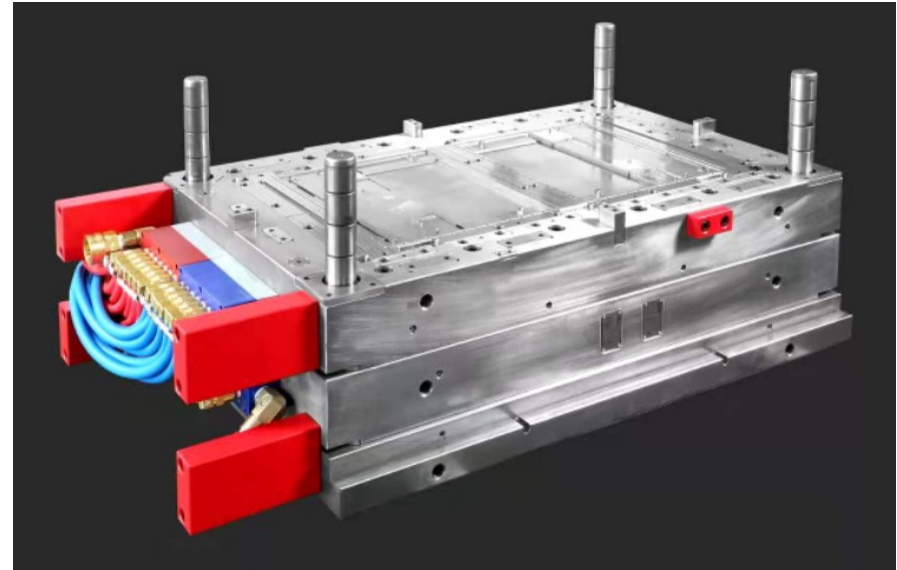
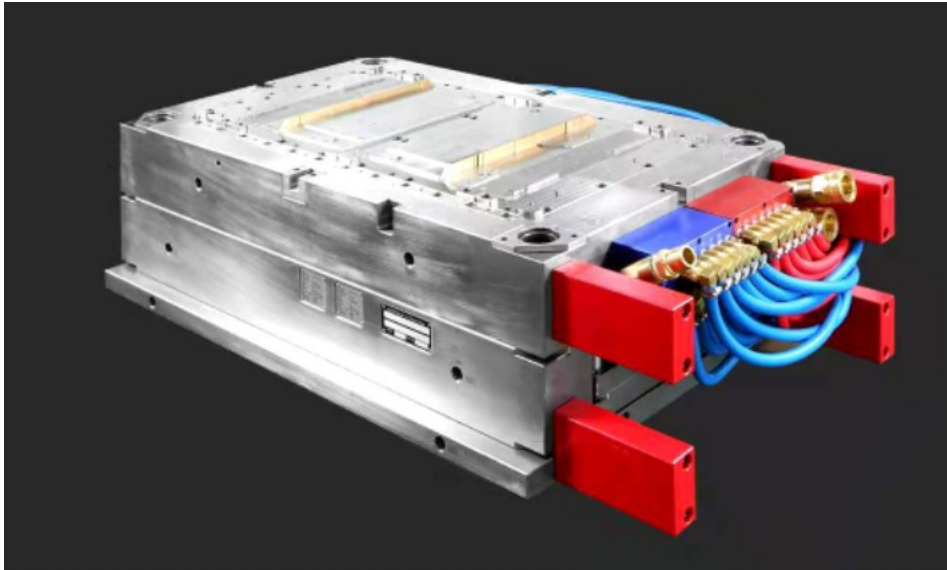
Equipment List of Tip-Top Molds

No.	Description	Specification	Origin	QNTY	Machining Stroke (X,Y,Z mm)			Remarks
					X	Y	Z	
1	CNC Machining Centre	JDCT600E A13S	Beijing, China	1	620	500	340	
2	CNC Machining Centre	1600LG	Xiehong, Taiwan	1	1500	700	650	
3	CNC Machining Centre	800LG	Xiehong, Taiwan	2	750	500	450	
4	CNC Machining Centre	500LG	Xiehong, Taiwan	1	450	300	350	
5	CNC Machining Centre	600	Baoling, China	3	500	300	300	
6	High Speed CNC Machining Centre	H10	Jiangze, Taiwan	1	1000	680	450	
7	High Speed CNC Machining Centre	2016	Baoling, China	1	2000	1600	750	
8	High Speed CNC Machining Centre	2518	Baoling, China	1	2500	1800	850	
9	Mold Spotting Machine	HMG-200JM	Shunxing Kaihao	1				200 Tons
10	CMM	DAISY 8106	AEH, China	1				
11	Projector machine	YF-3020	Yihui, China	1				
12	EDM Machine	800/A40	Mirrowdick, China	1	850	500	610	
13	EDM Machine	800/A40	Mirrowdick, China	1	400	300	150	
14	EDM Machine	850	Topedm, Taiwan	1				
15	EDM Machine	540	Topedm, Taiwan	1				
16	EDM Machine	450	Topedm, Taiwan	1				
17	EDM Machine	750	DMSPK, China	1				
18	EDM Machine	540	HONGYANG, China	2				
19	2-head of EDM machine	140	Mirrowdick, China	1	2400	1400	650	
20	2-head of EDM machine	HF130	Hanba, China	1	2500	1200	650	
21	Milling Machine	FTM-3TA	ACMAM, Taiwan	3				
22	Vertical Milling Machine	YD112-8/6/4 H5-32	Shanghai Wuji Machine, China	1				
23	Radial Milling Machine	Z3035*13	Longhua machine, China	1				
24	Grinding Machine	4080	Xinhongxin, China	1				
25	Grinding Machine	SDS 6-2V-618	Hengyu, Taiwan	3				
26	Lathe	C6140	Nanfang Machine, China	1				
27	Overhead Crane	1 Ton	Taixin, China	2				
28	Overhead Crane	5 Tons	Taixin, China	2				
29	Overhead Crane	10/5 Tons	Taixin, China	1				
30	Sawing Machine	GB712 BAND SAW	Xinxing Machine, China	1				
31	Tapping Machine by Air	SW-U630	Weixiang Server, China	2				
32	Chamfering Machine		RunDe, China	1				
33	Injection Molding Machine	HT200T	Haitian, China	1				
34	Injection Molding Machine	HT120T	Haitian, China	1				
35	Injection Molding Machine	HT100T	Haitian, China	1				
36	Injection Molding Machine	HT70T	Haitian, China	1				
37	Injection Molding Machine	188T	JSW, Japan	1				
38	Total:			48				



Molds will be packed carefully and then delivered to our overseas customers on time.

Thanks for your reading!



Best regards!